



NetApp®



## Datasheet

# NetApp FAS2200 Series

Make the smart decision about how you manage your resources, time, and money

### KEY BENEFITS

#### Start Right

More powerful systems start under \$8,000.

#### Keep It Simple

Make the most of limited resources.

#### Grow Smart

Have the flexibility to adapt to the growing needs of your business.

### The Challenge

#### Explosive data growth

Whether you are responsible for a growing midsize business or a remote or branch office of a larger organization, you are challenged more than ever by shrinking budgets, overextended staff, and the need to do more with less. These challenges, coupled with the increasing complexity of your Windows®, VMware®, or server virtualization environment, can quickly eat into your budget and affect the productivity of your organization.

### The Solution

#### Start right

Are you managing server and application sprawl on a shoestring budget? The NetApp® FAS2200 series not only is affordable, but also provides a more powerful platform than other systems in its class:

- “No compromise” unified storage systems starting at under \$8,000
- SSD support across all FAS2200 series systems
- Ability to get more out of applications and improve storage efficiency with ultrafast flash using Flash Pool™ technology
- Industry-leading efficiency features built in at no additional cost

- Ability to use 50% less storage in virtual server environments—guaranteed\*
- Higher throughput with 10 Gigabit Ethernet support across all FAS2200 systems

#### Keep it simple

Free up your time, money, and people. You don't need to be a storage expert to deploy and manage NetApp storage systems. The NetApp FAS2200 series offers a powerful range of technologies to help increase the efficiency of your storage administrators:

- Rapidly deploy in just minutes using the new GUI-based System Setup utility
- Manage using your Microsoft Management Console, minimizing training costs
- Automatically optimize whether data is stored on flash or disk for better performance and management simplicity
- Gain tight integration with key business applications to enable administrators to manage 2 to 3 times more storage
- Slash administrative overhead by up to 60% by leveraging one common skill set for all NetApp products

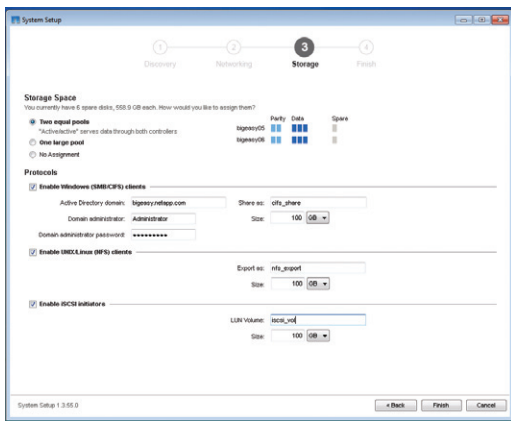


Figure 1) Quick and easy setup of FAS2200 systems using System Setup utility.

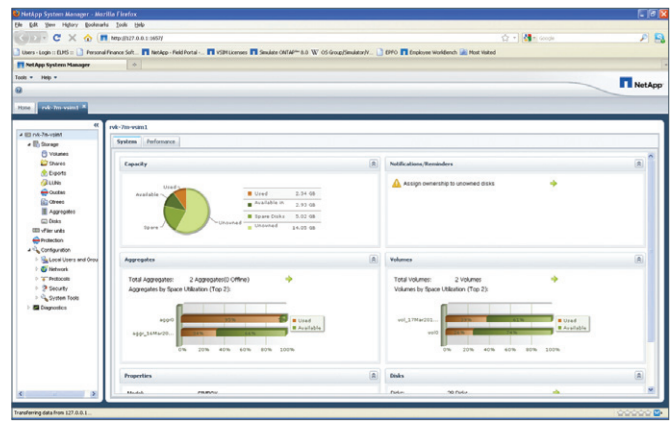


Figure 2) You don't need to be an expert to configure your storage with the simple, easy-to-use NetApp System Manager Console.

- Easily tune and troubleshoot virtual server environments with OnCommand® Balance

### NetApp System Setup and OnCommand System Manager

System Setup is an intuitive GUI-based utility that dramatically simplifies the setup and provisioning of your FAS2200 systems. It takes you through three simple screens and reduces setup time from hours to just minutes. It also takes the guesswork out of the process and provides the recommended defaults and best practices for optimal system utilization and performance.

OnCommand System Manager is a simple but powerful browser-based management tool that enables administrators to easily configure and manage individual NetApp FAS2200 systems:

- Intuitive wizard and workflow-driven interface to automate common storage tasks
- Flash Pool support—view, create, and manage Flash Pool environments
- A single interface for SAN and NAS environments
- System Manager for use across all NetApp storage systems and set up FAS2200 systems with one common tool, System Setup, across all geographic regions—unlike competitive products, which manage only one class of storage

### Grow smart

Protect your storage investment with systems that grow with your business needs:

- Get a truly unified storage architecture.
- Expand capacity and add functionality quickly and easily
- Seamlessly upgrade to other NetApp systems while using the same operating system and software tools
- Get built-in investment protection with the ability to convert your FAS2240 system to an external disk shelf for upgrading to larger NetApp systems

### Data ONTAP Software Simplified software

NetApp FAS2200 systems use the Data ONTAP® storage operating system, plus a common set of powerful, easy-to-use data management and data protection software products. The scalable, unified software of NetApp systems provides a common software environment for both NAS and SAN, from entry-level systems through the largest data center systems.

With NetApp software on the FAS2200 you can:

- Enable each administrator to manage two to three times more storage
- Protect your critical data

- Reduce disk purchases by 50% or more through a superior set of storage efficiency features
- Reduce provisioning time by up to 90%
- Cut test and development time in half

Included standard with every FAS2200 system is a set of powerful NetApp software products that deliver highly efficient storage, simple management tools, and high performance. In addition, optional Extended-Value Software products offer advanced capabilities such as instant data recovery, instant cloning, data replication, disk-to-disk backup, and application-aware backup and recovery.

### Choosing the Right System

NetApp offers two systems in the FAS2200 family to help you find the balance of price, performance, and features that best fits your needs.

#### FAS2240

Equipped for higher performance or capacity needs, the FAS2240 is a good fit for:

- Midsize businesses or distributed sites of larger organizations
- Windows® application and virtual server consolidation with multiple workloads

FAS2200 SERIES OVERVIEW	FAS2240-2	FAS2240-4	FAS2220
Form factor	2U/24 drive	4U/24 drive	2U/12 drive
Dual controllers	Yes	Yes	Yes
Maximum raw capacity	374TB	432TB	180TB
Maximum disk drives	144	144	60
Maximum Ethernet ports	8	8	8
Onboard SAS port	4	4	4
NetApp Flash Pool support	Yes	Yes	Yes
8Gb FC support	Yes <sup>1</sup>	Yes <sup>1</sup>	No
10GbE support	Yes <sup>1</sup>	Yes <sup>1</sup>	Yes <sup>1,2</sup>
Remote management	Yes	Yes	Yes
Storage protocols	FCP, iSCSI, NFS, CIFS	FCP, iSCSI, NFS, CIFS	iSCSI, NFS, CIFS

All specifications are for dual-controller, active-active configurations.

1. Based on optional dual-port 10GbE or 8Gb FC mezzanine card and single slot per controller.

2. Data ONTAP 8.1.2 and later.

- Customers that require higher performance, I/O flexibility, and investment protection for future growth

#### FAS2220

Geared toward value-oriented deployments, the FAS2220 is a good fit for:

- Midsize businesses, remote offices, and local storage
- Consolidating virtualized environments with a small number of Windows applications or general file-serving workloads
- Customers that need a powerful system at a competitive price

#### Global Support

##### SupportEdge Services

NetApp Global Support delivers high availability for your enterprise data environment and helps you optimize your storage investments. Let NetApp mitigate support issues and drive operational best practices. NetApp's innovative, proactive support means that you'll have fewer and less-severe support cases. But if a problem arises, our award-winning technical centers and field support staff—delivering in over 100 countries—won't rest until it's solved.

As an industry leader in innovation, NetApp Global Support provides tools and technology to enable business continuity. AutoSupport™, NetApp's suite of automation tools, is delivered as a service to help you proactively manage your systems and quickly resolve issues. AutoSupport functions as a "virtual staff" to protect critical data, save time, and reduce impact on your IT resources.

#### About NetApp

NetApp creates innovative storage and data management solutions that deliver outstanding cost efficiency and accelerate business breakthroughs. Discover our passion for helping companies around the world go further, faster at [www.netapp.com](http://www.netapp.com).

Go further, faster®

## FAS2200 SERIES SOFTWARE

### Included software

Data ONTAP Essentials:

**Efficiency:** FlexVol®, deduplication, compression, and thin provisioning

**Availability:** Multipath I/O and MultiStore®

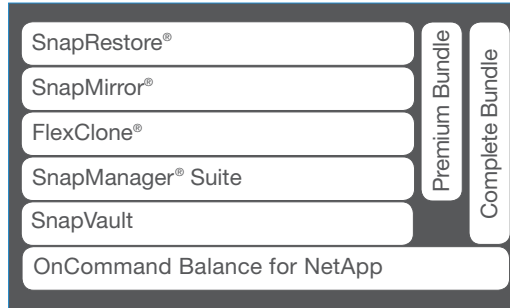
**Data protection:** RAID-DP®, Snapshot™, NearStore®, and Open Systems SnapVault®

**Performance:** FlexShare®

**Management:** System Manager, and Unified Manager

**Data protocols:** All supported data protocol licenses are included.

### Extended-Value software (optional)



### Software description

**SnapRestore:** Software to restore Snapshot copies in seconds

**SnapMirror:** Simple, efficient, and flexible disaster recovery

**FlexClone:** Instant virtual copies of databases or virtual machines

**SnapManager Suite:** Application- and virtual machine-aware backup, recovery, and cloning (for Oracle®, Exchange, SharePoint®, SQL Server®, SAP®, virtual infrastructure, and Hyper-V™)

**SnapVault:** Disk-to-disk backup software for complete backups and online archives to primary or secondary storage in minutes instead of hours or days

**OnCommand Balance for NetApp:** Advanced analytics for physical and virtual environments

**Complete Bundle:** All of the Extended-Value Software together in a single bundle for all-inclusive convenience (*excludes OnCommand Balance*)

**Premium Bundle:** For clustered Data ONTAP deployments, includes the Extended-Value Software in a single convenient bundle (*excludes SnapVault and OnCommand Balance*)



www.netapp.com

© 2013 NetApp, Inc. All rights reserved. No portions of this document may be reproduced without prior written consent of NetApp, Inc. Specifications are subject to change without notice. NetApp, the NetApp logo, Go further, faster, AutoSupport, Data ONTAP, Flash Pool, FlexClone, FlexShare, FlexVol, MultiStore, NearStore, OnCommand, RAID-DP, SnapManager, SnapMirror, SnapRestore, Snapshot, and SnapVault are trademarks or registered trademarks of NetApp, Inc. in the United States and/or other countries. Microsoft, SharePoint, SQL Server, and Windows are registered trademarks and Hyper-V is a trademark of Microsoft

Corporation. Oracle is a registered trademark of Oracle Corporation. SAP is a registered trademark of SAP AG. VMware is a registered trademark of VMware, Inc. All other brands or products are trademarks or registered trademarks of their respective holders and should be treated as such. DS-3318-0213

Follow us on: